



185 Jefferson Boulevard • Warwick, Rhode Island 02888 • (401) 738-1227 • FAX: (401) 738-3739

DIAMOND FINDINGS BASIC LEVERBACK CATALOG

PRIME TIME MFG.
185 JEFFERSON BOULEVARD, WARWICK, RI 02888
PHONE: 1-800-964-0020 FAX: 1-401-738-3739

14K DIAMOND TIFFANY PRE- NOTCH 4-PRONG EARRINGS



STYLE#	SUGGESTED TOTAL CTTW	PT SIZE	MM SIZE	14K GRAMS/PIECE
E141	0.02CT	1PT	1.25MM	0.0711
E1000P	0.04CT	2PT	1.75MM	0.0649

****ABOVE WEIGHTS/PRICES REFLECT #101 POST**

E1010P	0.06CT	2.5-3PT	1.9MM	0.0918
E1010P-SP	0.06CT	2.5-3PT	1.9MM	0.0855
E1011P	0.08CT	4PT	2.3MM	0.1011
E1011P-SP	0.08CT	4PT	2.3MM	0.0910
E1011.5P	0.10CT	5-6PT	2.45MM	0.1011
E1012P	0.14CT	7PT	2.7MM	0.1135
E1012P-SP	0.14CT	7PT	2.7MM	0.1042
E1013P	0.16CT	8PT	2.8MM	0.1353
E1013P-SP	0.16CT	8PT	2.8MM	0.1101
E1014P	0.18CT	9PT	2.9MM	0.1415
E1014P-SP	0.18CT	9PT	2.9MM	0.1198
E1015P	0.20CT	10PT	3.1MM	0.1571
E1015P-SP	0.20CT	10PT	3.1MM	0.1291
E1016P	0.25CT	12-15PT	3.4MM	0.1649
E1016P-SP	0.25CT	12-15PT	3.4MM	0.1322
E1017P	0.33CT	16-18PT	3.5MM	0.1858
E1017P-SP	0.33CT	16-18PT	3.5MM	0.1518
E1018P	0.40CT	20-22PT	3.9MM	0.2068
E1018P-SP	0.40CT	20-22PT	3.9MM	0.1757
E1019P	0.50CT	25-33PT	4.3MM	0.2224
E1019P-SP	0.50CT	25-33PT	4.3MM	0.1776
E1019P-XSP	0.50CT	25-33PT	4.3MM	0.1728
E1027P-92	0.50CT	25PT	4.3MM	0.2224
E1020P	0.75CT	36-40PT	4.7MM	0.2690
E1020P-SP	0.75CT	36-40PT	4.7MM	0.2095
E1021P	1.00CT	50-60PT	5.4MM	0.3079
E1021P-SP	1.00CT	50-60PT	5.4MM	0.2372
E1026P-92	1.00CT	50PT	5.4MM	0.3079
E1004P-92	1.50CT	75PT	6MM	0.3841
E1023P-92	2.00CT	1.00CT	6.25MM	0.3079
E1006P-92	2.00CT	1.00CT	6.5MM	0.3764
E1006AP-92	2.00CT	1.00CT	6.5MM	0.2720
E1008P-92	2.50CT	1.25CT	7MM	0.3910

****ABOVE WEIGHTS/PRICES REFLECT #92 POST**

POST OPTIONS

STYLE#	THICKNESS/ MEASURE	MM SIZE	14K GRAMS/ PIECE	TYPE
101	.026 X 3/8"	9.4MM	0.0392	FRICITION
90DN	.026 X 7/16"	11MM	0.0467	FRICITION DOUBLE NOTCH-- PAGODA SPECS
94	.027 X 3/8"	9.4MM	0.0435	FRICITION
92	.030 X 3/8"	9.4MM	0.0513	FRICITION
92DN	.030 X 3/8"	9.5MM	0.0555	FRICITION DOUBLE NOTCH-- ZALE SPECS
DNP030-440	.030 X.440	11.2MM	0.0652	FRICITION DOUBLE NOTCH-- ZALE SPECS
SC101	.029 X 0.400	10MM	0.0574	1/2 THREAD
SC101 SHORT	.029 X 0.320	8MM	0.0435	1/2 THREAD
SC101F	.034 X .385	9.8MM	0.0531	FULL THREAD

****PLEASE NOTE IF REAL RHODIUM PLATE REQUIRED WOULD BE AN ADDITIONAL CHARGE**

**** DEPENDING ON THE CUT OF YOUR STONES THE DIAMOND CTTW MAY VARY.**

****PLEASE REFER TO MM SIZE**

****PLEASE CONTACT YOUR SALES/CUSTOMER SERVICE CONTACT FOR EXACT PRICING SINCE GOLD MARKET WEIGHTS CAN VARY**

****PLEASE NOTE WHITE GOLD WOULD BE SAME WEIGHTS- STYLE # WOULD BE NOTED WITH AN "X" IN FRONT OF EXISTING NUMBER**

14K DIAMOND TIFFANY PRE- NOTCH 4-PRONG PENDANTS



CLOSED BACK



CLOSED BACK (OB)

STYLE#	SUGGESTED TOTAL CTTW	PT SIZE	MM SIZE	14K GRAMS/PIECE
P1000P	0.02CT	2PT	1.75MM	0.0848
P1010P	0.03CT	2.5-3PT	1.9MM	0.1135
P1010P-SP	0.03CT	2.5-3PT	1.9MM	0.1073
P1011P	0.04CT	4PT	2.3MM	0.1229
P1011P-SP	0.04CT	4PT	2.3MM	0.1128
P1011P OB	0.04CT	4PT	2.3MM	0.1120
P1011.5P	0.05-0.06CT	5PT-6PT	2.45MM	0.1229
P1012P	0.07CT	7PT	2.7MM	0.1353
P1012P-SP	0.07CT	7PT	2.7MM	0.1260
P1012P OB	0.07CT	7PT	2.7MM	0.1275
P1013P	0.08CT	8PT	2.8MM	0.1571
P1013P-SP	0.08CT	8PT	2.8MM	0.1319
P1013P OB	0.08CT	8PT	2.8MM	0.1477
P1014P	0.09CT	9PT	2.9MM	0.1633
P1014P-SP	0.09CT	9PT	2.9MM	0.1415
P1014P OB	0.09CT	9PT	2.9MM	0.1555
P1015P	0.10CT	10PT	3.1MM	0.1788
P1015P-SP	0.10CT	10PT	3.1MM	0.1509
P1015P OB	0.10CT	10PT	3.1MM	0.1649
P1016P	0.125CT	12-15PT	3.4MM	0.1866
P1016P-SP	0.125CT	12-15PT	3.4MM	0.1540
P1016P OB	0.125CT	12-15PT	3.4MM	0.1742
P1017P	0.165CT	16-18PT	3.5MM	0.2076
P1017P-SP	0.165CT	16-18PT	3.5MM	0.1736
P1018P	0.20CT	20-22PT	3.9MM	0.2286
P1018P-SP	0.20CT	20-22PT	3.9MM	0.1975
P1018P OB	0.20CT	20-22PT	3.9MM	0.2022
P1019P	0.25CT	25-33PT	4.3MM	0.2442
P1019P-SP	0.25CT	25-33PT	4.3MM	0.1994
P1019P OB	0.25CT	25-33PT	4.3MM	0.2084
P1020P	0.375CT	36-40PT	4.7MM	0.2908
P1020P-SP	0.375CT	36-40PT	4.7MM	0.2313
P1020P OB	0.375CT	36-40PT	4.7MM	0.2131
P1021P	0.50CT	50-60PT	5.4MM	0.3297
P1021P-SP	0.50CT	50-60PT	5.4MM	0.2589
P1021P OB	0.50CT	50-60PT	5.4MM	0.2659

****PLEASE NOTE IF REAL RHODIUM PLATE REQUIRED WOULD BE AN ADDITIONAL CHARGE**

**** DEPENDING ON THE CUT OF YOUR STONES THE DIAMOND CTTW MAY VARY.**

****PLEASE REFER TO MM SIZE**

****PLEASE CONTACT YOUR SALES/CUSTOMER SERVICE CONTACT FOR EXACT PRICING SINCE GOLD MARKET / WEIGHTS CAN VARY**

****PLEASE NOTE WHITE GOLD WOULD BE SAME WEIGHTS- STYLE # WOULD BE NOTED WITH AN "X" IN FRONT OF EXISTING NUMBER**

14K DIAMOND BUTTERCUP & 6-PRONG TIFFANY PRE-NOTCH



6-PRONG BUTTERCUP

STYLE#	SUGGESTED TOTAL CTTW	PT SIZE	MM SIZE	14K GRAMS/PIECE
E170	0.02CT	1PT	1.25MM	0.0799
E169	0.04CT	2-2.5PT	1.75-1.8MM	0.1138

**ABOVE WEIGHTS REFLECT #101 POST



6-PRONG TIFFANY PRE-NOTCH

STYLE#	SUGGESTED TOTAL CTTW	PT SIZE	MM SIZE	14K GRAMS/PIECE
E1115P	0.20CT	10PT	3.1MM	0.1809
E1116P	0.25CT	12-15PT	3.4MM	0.1913
E1116P-SP	0.25CT	12-15PT	3.4MM	0.1633
E1117P	0.33CT	16-18PT	3.5MM	0.2224
E1118P	0.40CT	20-22PT	3.9MM	0.2379
E1118P-SP	0.40CT	20-22PT	3.9MM	0.2040
E1119P	0.50CT	25-33PT	4.3MM	0.2535
E1120P	0.75CT	36-40PT	4.7MM	0.3002
E1121P	1.00CT	50-60PT	5.4MM	0.3313
E1121P-SP	1.00CT	50-60PT	5.4MM	0.2802

**ABOVE WEIGHTS/PRICES REFLECT #92 POST

POST OPTIONS

STYLE#	THICKNESS/ MEASURE	MM SIZE	14K GRAMS/ PIECE	TYPE
101	.026 X 3/8"	9.4MM	0.0392	FRICTION
90DN	.026 X 7/16"	11MM	0.0467	FRICTION DOUBLE NOTCH-- PAGODA SPECS
94	.027 X 3/8"	9.4MM	0.0435	FRICTION
92	.030 X 3/8"	9.4MM	0.0513	FRICTION
92DN	.030 X 3/8"	9.5MM	0.0555	FRICTION DOUBLE NOTCH-- ZALE SPECS
DNP030-440	.030 X .440	11.2MM	0.0652	FRICTION DOUBLE NOTCH-- ZALE SPECS
SC101	.029 X 0.400	10MM	0.0574	1/2 THREAD
SC101 SHORT	.029 X 0.320	8MM	0.0435	1/2 THREAD
SC101F	.034 X .385	9.8MM	0.0531	FULL THREAD

**PLEASE NOTE IF REAL RHODIUM PLATE REQUIRED WOULD BE AN ADDITIONAL CHARGE

** DEPENDING ON THE CUT OF YOUR STONES THE DIAMOND CTTW MAY VARY.

**PLEASE REFER TO MM SIZE

**PLEASE CONTACT YOUR SALES/CUSTOMER SERVICE CONTACT FOR EXACT PRICING SINCE GOLD MARKET/ WEIGHTS CAN VARY

14K DIAMOND BUTTERCUP & 6-PRONG TIFFANY PRE-NOTCH



6-PRONG BUTTERCUP

STYLE#	SUGGESTED TOTAL CTTW	PT SIZE	MM SIZE	14K GRAMS/PIECE
P170	0.01CT	1PT	1.25MM	0.0998
P169	0.02CT	2-2.5PT	1.75-1.8MM	0.1337



6-PRONG TIFFANY PRE-NOTCH

STYLE#	SUGGESTED TOTAL CTTW	PT SIZE	MM SIZE	14K GRAMS/PIECE
P1115P	0.10CT	10PT	3.1MM	0.2026
P1116P	0.12CT	12-15PT	3.4MM	0.2131
P1116P-SP	0.12CT	12-15PT	3.4MM	0.1851
P1117P	0.16CT	16-18PT	3.5MM	0.2442
P1118P	0.20CT	20-22PT	3.9MM	0.2597
P1118P-SP	0.20CT	20-22PT	3.9MM	0.2258
P1119P	0.25CT	25-33PT	4.3MM	0.2753
P1120P	0.36CT	36-40PT	4.7MM	0.3219
P1121P	0.50CT	50-60PT	5.4MM	0.3530
P1121P-SP	0.50CT	50-60PT	5.4MM	0.3020

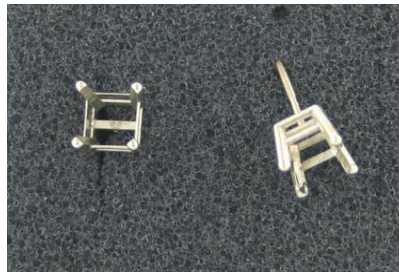
****PLEASE NOTE IF REAL RHODIUM PLATE REQUIRED WOULD BE AN ADDITIONAL CHARGE**

**** DEPENDING ON THE CUT OF YOUR STONES THE DIAMOND CTTW MAY VARY.**

****PLEASE REFER TO MM SIZE**

****PLEASE CONTACT YOUR SALES/CUSTOMER SERVICE CONTACT FOR EXACT PRICING SINCE GOLD MARKET / WEIGHTS CAN VARY**

14K DIAMOND SQUARE CAST BASKET EARRINGS NO PRE-NOTCH



1.75MM-3.0MM CLOSED BACK

3.25MM AND UP OPEN BACK

STYLE#	SUGGESTED TOTAL CTTW	MM SIZE	14K GRAMS/PIECE
EK1311	0.075CT	1.75MM	0.1092
EK2.0	0.125CT	2MM	0.1053
EK1313	0.16CT	2.25MM	0.1348
EK1315	0.20CT	2.5MM	0.1593
EK2.5	0.20CT	2.5MM	0.1566
EK1316	0.25CT	2.75MM	0.2166
EK2.75	0.25CT	2.75MM	0.1554
EK1317	0.30CT	3MM	0.2644
EK3.0	0.30CT	3MM	0.2238
EKO3.0	0.30CT	3MM	0.2274
EK1318	0.40CT	3.25MM	0.2890
EK3.25	0.40CT	3.25MM	0.2244
EKO3.25	0.40CT	3.25MM	0.2163
EK1319	0.45CT	3.5MM	0.3168
EK3.5	0.45CT	3.5MM	0.2103
EK1320	0.50CT	3.75MM	0.3505
EK3.75	0.50CT	3.75MM	0.2686
EKO3.75	0.50CT	3.75MM	0.3648
EK1321	0.60CT	4MM	0.3946
EK4.0	0.60CT	4MM	0.3089
EKO4.0	0.60CT	4MM	0.3746
EKO4.2	0.60CT	4.2MM	0.3774
EK4.25	0.67CT	4.25MM	0.3638
EK4.5	0.80CT	4.5MM	0.4477
EKO4.5	0.80CT	4.5MM	0.3804
EKO4.7	1.00CT	4.7MM	0.4025
EK1324	1.00CT	4.75MM	0.6056
EK4.75	1.00CT	4.75MM	0.4914
EK5.0	1.25CT	5MM	0.3711
EK5.25	1.50CT	5.25MM	0.3726
EK5.5	1.75CT	5.5MM	0.3883
EK5.75	2.00CT	5.75MM	0.4613

**ABOVE WEIGHTS REFLECT #92 POST

POST OPTIONS

STYLE#	THICKNESS/ MEASURE	MM SIZE	14K GRAMS/PIECE	INCR/\$ /PIECE
101	.026 X 3/8"	9.4MM	0.0392	0.0010
90DN	.026 X 7/16"	11MM	0.0467	0.0011
94	.027 X 3/8"	9.4MM	0.0435	0.0011
92	.030 X 3/8"	9.4MM	0.0513	0.0013
92DN	.030 X 3/8"	9.5MM	0.0555	0.0014
DNP030-440	.030 X .440	11.2MM	0.0652	0.0016
SC101	.029 X 0.400	10MM	0.0574	0.0014
SC101 SHORT	.029 X 0.320	8MM	0.0435	0.0011
SC101F	.034X .385	9.8MM	0.0363	0.0013

****PLEASE NOTE IF REAL RHODIUM PLATE REQUIRED WOULD BE AN ADDITIONAL CHARGE**

**** DEPENDING ON THE CUT OF YOUR STONES THE DIAMOND CTTW MAY VARY.**

****PLEASE REFER TO MM SIZE**

****PLEASE CONTACT YOUR SALES/CUSTOMER SERVICE CONTACT FOR EXACT PRICING SINCE GOLD MARKET/WEIGHTS CAN VARY**

18K DIAMOND SQUARE CAST BASKET EARRINGS NO PRE-NOTCH



1.75MM-3.0MM CLOSED BACK

3.25MM AND UP OPEN BACK

STYLE#	SUGGESTED TOTAL CTTW	MM SIZE	ESTIMATED 18K GRAMS/PIECE
YEK1311	0.075CT	1.75MM	0.1305
YEK2.0	0.125CT	2MM	0.1258
YEK1313	0.16CT	2.25MM	0.1613
YEK1315	0.20CT	2.5MM	0.1907
YEK2.5	0.20CT	2.5MM	0.1876
YEK1316	0.25CT	2.75MM	0.2594
YEK2.75	0.25CT	2.75MM	0.1860
YEK1317	0.30CT	3MM	0.3168
YEK3.0	0.30CT	3MM	0.2680
YEKO3.0	0.30CT	3MM	0.2580
YEK1318	0.40CT	3.25MM	0.3462
YEK3.25	0.40CT	3.25MM	0.2689
YEKO3.25	0.40CT	3.25MM	0.2591
YEK1319	0.45CT	3.5MM	0.3798
YEK3.5	0.45CT	3.5MM	0.2518
YEK1320	0.50CT	3.75MM	0.4201
YEK3.75	0.50CT	3.75MM	0.3218
YEKO3.75	0.50CT	3.75MM	0.4373
YEK1321	0.60CT	4MM	0.4731
YEK4.0	0.60CT	4MM	0.3701
YEKO4.0	0.60CT	4MM	0.4491
YEKO4.2	0.60CT	4.2MM	0.4524
YEK4.25	0.67CT	4.25MM	0.4361
YEK4.5	0.80CT	4.5MM	0.5370
YEKO4.5	0.80CT	4.5MM	0.4560
YEK1324	1.00CT	4.75MM	0.7263
YEK4.75	1.00CT	4.75MM	0.5893
YEK5.0	1.25CT	5MM	0.4449
YEK5.25	1.50CT	5.25MM	0.4468
YEK5.5	1.75CT	5.5MM	0.4656
YEK5.75	2.00CT	5.75MM	0.5530

**ABOVE WEIGHTS/PRICES REFLECT #92 POST

POST OPTIONS

STYLE#	THICKNESS/ MEASURE	MM SIZE	18K GRAMS/PIECE	TYPE
Y101	.026 X 3/8"	9.4MM	0.0470	FRICITION
Y90DN	.026 X 7/16"	11MM	0.0560	FRICITION DOUBLE NOTCH-- PAGODA SPECS
Y92	.030 X 3/8"	9.4MM	0.0611	FRICITION
Y92DN	.030 X 3/8"	9.5MM	0.0666	FRICITION DOUBLE NOTCH-- ZALE SPECS
YDNP030-440	.030 X .440	11.2MM	0.0782	FRICITION DOUBLE NOTCH-- ZALE SPECS
YSC101	.029 X 0.400	10MM	0.0689	1/2 THREAD
YSC101F	.034X .385	9.8MM	0.0622	FULL THREAD

**PLEASE NOTE IF REAL RHODIUM PLATE REQUIRED WOULD BE AN ADDITIONAL CHARGE

** DEPENDING ON THE CUT OF YOUR STONES THE DIAMOND CTTW MAY VARY.

**PLEASE REFER TO MM SIZE

**PLEASE CONTACT YOUR SALES/CUSTOMER SERVICE CONTACT FOR EXACT PRICING SINCE GOLD MARKET/WGTS CAN VARY

14K-DIAMOND ROUND CAST BASKET EARRINGS PRE-NOTCH



STYLE#	SUGGESTED TOTAL CTTW	PT SIZE	MM SIZE	14K GRAMS/PIECE
E1011KP	0.04CT	2-2.5PT	1.75MM	0.0852
E1012KP	0.06CT	3PT	2MM	0.0911
E1039KP	0.08CT	4PT	2.25MM	0.1009
E1014KP	0.12CT	6PT	2.5MM	0.1201
E1015KP	0.20CT	10PT	3MM	0.1303
E1016KP	0.25CT	12PT	3.25MM	0.1460
E1017KP	0.32CT	16PT	3.5MM	0.1540
E1018KP	0.40CT	20PT	3.75MM	0.1659
E1019KP	0.50CT	25PT	4MM	0.2258
E1019KP-SP-92	0.50CT	25PT	4MM	0.1838
E1020KP	0.75CT	36PT	4.4MM	0.2484
E1021KP	1.00CT	50PT	5MM	0.2958
E1022KP	1.20CT	60PT	5.4MM	0.3429
E1033KP-92	1.50CT	75PT	6MM	0.2664
E1023KP-92	2.00CT	1.00CT	6.25MM	0.2622
E1025KP-SP-92	2.50CT	1.25CT	7MM	0.3891
E1030KP-92	4.00CT	2.00CT	8MM	0.4280
E1029KP-92	5.50CT	2.75CT	9MM	0.4877
E1028KP-92	7.00CT	3.50CT	10MM	0.4812

**ABOVE WEIGHTS/PRICING REFLECT #92 POST

POST OPTIONS

STYLE#	THICKNESS/ MEASURE	MM SIZE	14K GRAMS/PIECE	TYPE
101	.026 X 3/8"	9.4MM	0.0392	FRICTION
90DN	.026 X 7/16"	11MM	0.0467	FRICTION DOUBLE NOTCH-- PAGODA SPECS
94	.027 X 3/8"	9.4MM	0.0435	FRICTION
92	.030 X 3/8"	9.4MM	0.0513	FRICTION
92DN	.030 X 3/8"	9.5MM	0.0555	FRICTION DOUBLE NOTCH-- ZALE SPECS
DNP030-440	.030 X .440	11.2MM	0.0652	FRICTION DOUBLE NOTCH-- ZALE SPECS
SC101	.029 X 0.400	10MM	0.0574	1/2 THREAD
SC101 SHORT	.029 X 0.320	8MM	0.0435	1/2 THREAD
SC101F	.034 X .385	9.8MM	0.0531	FULL THREAD

**PLEASE NOTE IF REAL RHODIUM PLATE REQUIRED WOULD BE AN ADDITIONAL CHARGE

** DEPENDING ON THE CUT OF YOUR STONES THE DIAMOND CTTW MAY VARY.

**PLEASE REFER TO MM SIZE

**PLEASE CONTACT YOUR SALES/CUSTOMER SERVICE CONTACT FOR EXACT PRICING SINCE GOLD MARKET/ WEIGHTS CAN VARY

14K-DIAMOND ROUND CAST BASKET PENDANT PRE-NOTCH



STYLE#	SUGGESTED TOTAL CTTW	PT SIZE	MM SIZE	14K GRAMS/PIECE
P1015KP	0.10CT	10PT	3MM	0.1521
P1018KP	0.20CT	20PT	3.75MM	0.1877
P1019KP	0.25CT	25PT	4MM	0.2476
P1020KP	0.36CT	36PT	4.4MM	0.2701
P1021KP	0.50CT	50PT	5MM	0.3176
P1022KP	0.60CT	60PT	5.4MM	0.3647
P1033KP	0.75CT	75PT	6MM	0.2882
P1023KP (KS#1465)	1.00CT	1.00CT	6.25MM	0.2840
P1025KP-SP	1.25CT	1.25CT	7MM	0.4109
P1030KP	2.00CT	2.00CT	8MM	0.4498

****PLEASE NOTE IF REAL RHODIUM PLATE REQUIRED WOULD BE AN ADDITIONAL CHARGE**

**** DEPENDING ON THE CUT OF YOUR STONES THE DIAMOND CTTW MAY VARY.**

****PLEASE REFER TO MM SIZE**

****PLEASE CONTACT YOUR SALES/CUSTOMER SERVICE CONTACT FOR EXACT PRICING SINCE GOLD MARKET WEIGHTS CAN VARY**

18K DIAMOND ROUND CAST BASKET EARRINGS PRE-NOTCH



STYLE#	SUGGESTED TOTAL CTTW	PT SIZE	MM SIZE	ESTIMATED 18K GRAMS/PIECE
YE1012KP	0.06CT	3PT	2MM	0.1090
YE1014KP	0.12CT	6PT	2.5MM	0.1435
YE1015KP	0.20CT	10PT	3MM	0.1566
YE1016KP	0.25CT	12PT	3.25MM	0.1748
YE1017KP	0.32CT	16PT	3.5MM	0.1844
YE1018KP	0.40CT	20PT	3.75MM	0.1986
YE1019KP	0.50CT	25PT	4MM	0.2728
YE1020KP	0.75CT	36PT	4.4MM	0.2975
YE1021KP	1.00CT	50PT	5MM	0.3406
YE1022KP	1.20CT	60PT	5.4MM	0.4110
YE1033KP-92	1.50CT	75PT	6MM	0.3191

**ABOVE WEIGHTS/PRICING REFLECT #92 POST

POST OPTIONS

STYLE#	THICKNESS/ MEASURE	MM SIZE	18K GRAMS/PIECE	TYPE
Y101	.026 X 3/8"	9.4MM	0.0470	FRICTION
Y90DN	.026 X 7/16"	11MM	0.0560	FRICTION DOUBLE NOTCH-- PAGODA SPECS
Y92	.030 X 3/8"	9.4MM	0.0611	FRICTION
Y92DN	.030 X 3/8"	9.5MM	0.0666	FRICTION DOUBLE NOTCH-- ZALE SPECS
YDNP030-440	.030 X .440	11.2MM	0.0782	FRICTION DOUBLE NOTCH-- ZALE SPECS
YSC101	.029 X 0.400	10MM	0.0689	1/2 THREAD
YSC101F	.034 X .385	9.8MM	0.0622	FULL THREAD

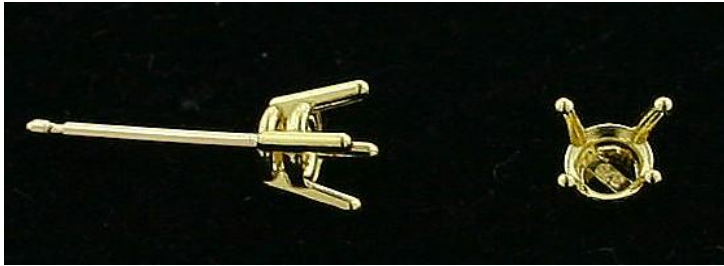
**PLEASE NOTE IF REAL RHODIUM PLATE REQUIRED WOULD BE AN ADDITIONAL CHARGE

** DEPENDING ON THE CUT OF YOUR STONES THE DIAMOND CTTW MAY VARY.

**PLEASE REFER TO MM SIZE

**PLEASE CONTACT YOUR SALES/CUSTOMER SERVICE CONTACT FOR EXACT PRICING SINCE GOLD MARKET /WEIGHTS CAN VARY

14K DIAMOND ROUND CAST BASKET EARRINGS NON- PRE-NOTCH



STYLE#	SUGGESTED TOTAL CTTW	MM SIZE	14K GRAMS/PIECE
KS# 1602	0.25CT	3.25MM	0.2241
KS#1603	0.32CT	3.5MM	0.2420
KS#1604	0.36CT	3.75MM	0.2269
KS#1605-92	0.70CT	4.5MM	0.2872
KS#1606-92	1.00CT	5MM	0.3056
KS#1527-92	1.00CT	5MM	0.3143
EKDR5.25	1.10CT	5.25MM	0.2477
KS#1528-92	1.10CT	5.25MM	0.3437
KS#1607-92	1.10CT	5.25MM	0.3313
KS#1529-92	1.26CT	5.5MM	0.3568

POST OPTIONS

STYLE#	THICKNESS/ MEASURE	MM SIZE	14K GRAMS/PIECE	TYPE
101	.026 X 3/8"	9.4MM	0.0392	FRICTION
90DN	.026 X 7/16"	11MM	0.0467	FRICTION DOUBLE NOTCH-- PAGODA SPECS
94	.027 X 3/8"	9.4MM	0.0435	FRICTION
92	.030 X 3/8"	9.4MM	0.0513	FRICTION
92DN	.030 X 3/8"	9.5MM	0.0555	FRICTION DOUBLE NOTCH-- ZALE SPECS
DNP030-440	.030 X .440	11.2MM	0.0652	FRICTION DOUBLE NOTCH-- ZALE SPECS
SC101	.029 X 0.400	10MM	0.0574	1/2 THREAD
SC101 SHORT	.029 X 0.320	8MM	0.0435	1/2 THREAD
SC101F	.034 X .385	9.8MM	0.0531	FULL THREAD

****PLEASE NOTE IF REAL RHODIUM PLATE REQUIRED WOULD BE AN ADDITIONAL CHARGE**

**** DEPENDING ON THE CUT OF YOUR STONES THE DIAMOND CTTW MAY VARY.**

****PLEASE REFER TO MM SIZE**

****PLEASE CONTACT YOUR SALES/CUSTOMER SERVICE CONTACT FOR EXACT PRICING SINCE GOLD MARKET / WEIGHTS/ CAN VARY**

14K CLUTCHES



BASIC



CLUTCH PT1



CLUTCH PT3



CLUTCH PT4

FRICION POST CLUTCH

STYLE #	14K GRAMS/PIECE
102	0.0342
102HW	0.0398
104	0.0358
104HW	0.0513
100	0.0490
100HW	0.0653
14K CLUTCH-PT1	0.0532
14K CLUTCH-PT3	0.1042
14K CLUTCH-PT4	0.1000



114 CLUTCH- LARGE CURLS/ROUND BASE

115 CLUTCH- FILIGREE

116- LARGE SIZE HW ROUND BASE

FRICION POST CLUTCH

STYLE #	14K GRAMS/PIECE
115	0.0467
114	0.0490
116	0.0649



1200/1200HW

1200-G1

1200-G2

ZZ1594C

STYLE #	14K GRAMS/PIECE	TYPE
1200	0.0529	PUSH ON/SCREW OFF
1200HW	0.0700	PUSH ON/SCREW OFF
1200-G1	0.1124	SCREW ON/SCREW OFF
1200-G2	0.1434	SCREW ON/SCREW OFF
ZZ1594C	0.0415	SCREW ON/SCREW OFF

****PLEASE NOTE IF REAL RHODIUM PLATE REQUIRED WOULD BE AN ADDITIONAL CHARGE**

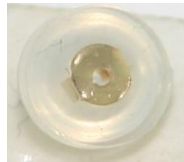
****PLEASE CONTACT YOUR SALES/CUSTOMER SERVICE CONTACT FOR EXACT PRICING SINCE GOLD MARKET/WEIGHTS CAN VARY**

**PLEASE NOTE WHITE GOLD WOULD BE SAME WEIGHTS- STYLE # WOULD BE NOTED WITH AN "X" IN FRONT OF EXISTING NUMBER

14K CLUTCHES



CLUTCH J1- J2



CLUTCH -E1

FRICITION POST SILICONE CLUTCH

STYLE #	14K GRAMS/PIECE
CLUTCH-J1 (MED)	0.0219
CLUTCH-J2 (SMALL)	0.0137
CLUTCH-E1 (SMALL)	0.0159

****PLEASE NOTE IF REAL RHODIUM PLATE REQUIRED WOULD BE AN ADDITIONAL CHARGE**

****PLEASE CONTACT YOUR SALES/CUSTOMER SERVICE CONTACT FOR EXACT PRICING SINCE GOLD MARKET/WEIGHTS CAN VARY**

****PLEASE NOTE WHITE GOLD WOULD BE SAME WEIGHTS- STYLE # WOULD BE NOTED WITH AN "X" IN FRONT OF EXISTING NUMBER**

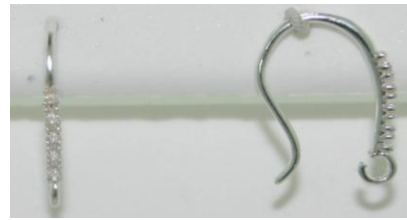
14K LEVERBACK- FISH HOOK COMPONENTS



KSAMPLE #3163



RM503



RM504



RM505



KSAMPLE #3355



KSAMPLE #3356



KSAMPLE #3358

STYLE #	PT SIZES	MM SIZE	14K GRAMS /PIECE
KSAMPLE #3163	1PT (X5)	1.25MM (X5)	0.3848
RM503	1PT (X7)	1.25MM (X7)	0.3149
RM504	1/2PT (X5)	1MM (X5)	0.2969
RM505	N/A	N/A	0.2196
KSAMPLE #3355	1PT (X5)	1.25MM (X5)	0.5106
KSAMPLE #3356	1PT (X1) ILLUSION (X4)	1.25MM (X1)	0.4885
KSAMPLE #3358	1PT (X5)	1.25MM (X5)	0.4236

****PLEASE NOTE IF REAL RHODIUM PLATE REQUIRED WOULD BE AN ADDITIONAL CHARGE**

**** DEPENDING ON THE CUT OF YOUR STONES THE DIAMOND CTTW MAY VARY.**

****PLEASE REFER TO MM SIZE**

****PLEASE CONTACT YOUR SALES/CUSTOMER SERVICE CONTACT FOR EXACT PRICING SINCE GOLD MARKET/WEIGHTS CAN VARY**

****PLEASE NOTE WHITE GOLD WOULD BE SAME WEIGHTS- STYLE # WOULD BE NOTED WITH AN "X" IN FRONT OF EXISTING DIAMOND FINDINGS CATALOG 2011-MAY-WEB.xls NUMBER**

14K CASTED BAILS



XRM776



XRM777



XRM778

STYLE #		14K GRAMS /PIECE
XRM776	14K CAST FOLDOVER BAIL /1PT ILLUSION	0.3942
XRM777	14K CAST FOLDOVER BAIL /1PT (5)	0.3891
XRM778	14K CAST OVAL SHAPE BAIL /1PT (5)	0.3348

****PLEASE NOTE IF REAL RHODIUM PLATE REQUIRED WOULD BE AN ADDITIONAL CHARGE**

**** DEPENDING ON THE CUT OF YOUR STONES THE DIAMOND CTTW MAY VARY.**

****PLEASE REFER TO MM SIZE**

****PLEASE CONTACT YOUR SALES/CUSTOMER SERVICE CONTACT FOR EXACT PRICING SINCE GOLD MARKET/WEIGHTS CAN VARY**

14K CLUSTER DIAMOND EARS



KSAMPLE #3324



KSAMPLE #3323



KSAMPLE #3220



KSAMPLE #3357



KSAMPLE #3755



KSAMPLE #3939

STYLE #	PT SIZES	MM SIZE	14K GRAMS /PIECE
KSAMPLE #3324	1PT (X15)	5MM (X1)/1.25MM (X15)	0.4575
KSAMPLE #3323	1PT (X3)	5MM (X1)/1.25MM (X3) ILL	0.4910
KSAMPLE #3220	1/2PT (X18)	5MM (X1)/1MM (X18)	0.4036
KSAMPLE #3357	1/2PT (X18)	6X4 OCT (X1)/1MM (X18)	0.6191
KSAMPLE #3755		8MM (X1)/1.5MM (X15)	0.5019
KSAMPLE #3939		8MM (X1)/1.5MM (X18)	0.5345

****PLEASE NOTE IF REAL RHODIUM PLATE REQUIRED WOULD BE AN ADDITIONAL CHARGE**

**** DEPENDING ON THE CUT OF YOUR STONES THE DIAMOND CTTW MAY VARY.**

****PLEASE REFER TO MM SIZE**

****PLEASE CONTACT YOUR SALES/CUSTOMER SERVICE CONTACT FOR EXACT PRICING SINCE GOLD MARKET/WEIGHTS CAN VARY**

****PLEASE NOTE WHITE GOLD WOULD BE SAME WEIGHTS- STYLE # WOULD BE NOTED WITH AN "X" IN FRONT OF EXISTING DIAMOND FINDINGS CATALOG 2011-MAY-WEB.xls NUMBER**

14K/10K DIAMOND TIFFANY GRADUATED LEVERBACKS PRE-NOTCH



STYLE #	KT	PT SIZES	SUGGESTED TOTAL CTTW	MM SIZE	CTW	GRAMS /PIECE
LC5409P	14KY	1PT/2PT/2.5-3PT	0.125CT	1.25MM/1.7MM/1.9MM	1/8 CTW	0.3476
TLC5409P	10KY	1PT/2PT/2.5-3PT	0.125CT	1.25MM/1.7MM/1.9MM	1/8 CTW	0.3114
LC5411P	14KY	2PT/2.5-3PT/4PT	0.16CT	1.7MM/1.9MM/2.3MM	1/6 CTW	0.3655
TLC5411P	10KY	2PT/2.5-3PT/4PT	0.16CT	1.7MM/1.9MM/2.3MM	1/6 CTW	0.3274
LC5434P	14KY	2.5-3PT/4PT/7PT	0.25CT	1.9MM/2.3MM/2.7MM	1/4 CTW	0.4020
TLC5434P	10KY	2.5-3PT/4PT/7PT	0.25CT	1.9MM/2.3MM/2.7MM	1/4 CTW	0.3600
LC5410P	14KY	4PT/7PT/9PT	0.40 CT	2.3MM/2.7MM/2.9MM	.40 CTW	0.4518
TLC5410P	10KY	4PT/7PT/9PT	0.40 CT	2.3MM/2.7MM/2.9MM	.40 CTW	0.4051
LC5433P	14KY	7PT/9PT/12-15PT	0.50CT	2.7MM/2.9MM/3.4MM	1/2 CTW	0.5155
TLC5433P	10KY	7PT/9PT/12-15PT	0.50CT	2.7MM/2.9MM/3.4MM	1/2 CTW	0.4625
LC5435P	14KY	10PT/12-15PT/16-18PT	0.75CT	3.1MM/3.4MM/3.5MM	3/4 CTW	0.6034
TLC5435P	10KY	10PT/12-15PT/16-18PT	0.75CT	3.1MM/3.4MM/3.5MM	3/4 CTW	0.5437
LC5407P	14KY	12-15PT/16-18PT/20-22PT	1.00CT	3.4MM/3.5MM/3.9MM	1 CTW	0.6532
TLC5407P	10KY	12-15PT/16-18PT/20-22PT	1.00CT	3.4MM/3.5MM/3.9MM	1 CTW	0.5932

****PLEASE NOTE IF REAL RHODIUM PLATE REQUIRED WOULD BE AN ADDITIONAL CHARGE**

**** DEPENDING ON THE CUT OF YOUR STONES THE DIAMOND CTTW MAY VARY.**

****PLEASE REFER TO MM SIZE**

****PLEASE CONTACT YOUR SALES/CUSTOMER SERVICE CONTACT FOR EXACT PRICING SINCE GOLD MARKET/WEIGHTS CAN VARY**

14K/10K DIAMOND TIFFANY GRADUATED PENDANTS PRE-NOTCH



STYLE #	KT	PT SIZES	SUGGESTED TOTAL CTTW	MM SIZE	GRAMS /PIECE
PC5434P	14KY	2.5-3PT/4PT/7PT	0.125CT	1.9MM/2.3MM/2.7MM	0.2519
TPC5434P	10KY	2.5-3PT/4PT/7PT	0.125CT	1.9MM/2.3MM/2.7MM	0.2257
PC5433P	14KY	7PT/9PT/12-15PT	0.25CT	2.7MM/2.9MM/3.4MM	0.3837
TPC5433P	10KY	7PT/9PT/12-15PT	0.25CT	2.7MM/2.9MM/3.4MM	0.3449
PC5400P	14KY	12-15PT/16-18PT/20-22PT	0.50CT	3.4MM/3.5MM/3.9MM	0.5213
TPC5400P	10KY	12-15PT/16-18PT/20-22PT	0.50CT	3.4MM/3.5MM/3.9MM	0.4756

****PLEASE NOTE IF REAL RHODIUM PLATE REQUIRED WOULD BE AN ADDITIONAL CHARGE**

**** DEPENDING ON THE CUT OF YOUR STONES THE DIAMOND CTTW MAY VARY.**

****PLEASE REFER TO MM SIZE**

****PLEASE CONTACT YOUR SALES/CUSTOMER SERVICE CONTACT FOR EXACT PRICING SINCE GOLD MARKET/WEIGHTS CAN VARY**

14K CLUSTER HOOPS FOR DIAMONDS

BASIC IMAGE	STYLE #	KT	DESCRIPTION	GRAM WGT/ PAIR
	14K SAMPLE #2589	14KY	14KY CAST 1PT(12)-17X27 OVAL SNAP HOOP	1.2414
	14K XSAMPLE #2589	14KW	14KW CAST 1PT(12)-17X27 OVAL SNAP HOOP	1.2414
	K2752-S	14KY	14KY 2PT(3)/12MM 070 SNAP HOOP	0.7900
	XK2752-S	14KW	14KW 2PT(3)/12MM 070 SNAP HOOP	0.7900
	14K SAMPLE #1512	14KY	14KY CAST OVAL SNAP HOOP/ 2PT (6)	1.4765
	14K XSAMPLE #1512	14KW	14KW CAST OVAL SNAP HOOP/ 2PT (6)	1.4765
	14K SAMPLE #2532	14KY	14KY CAST 1PT(12)/ 17 X27 OVL SNAP HOOP	1.8429
	14K XSAMPLE #2532	14KW	14KW CAST 1PT(12)/ 17 X27 OVL SNAP HOOP	1.8429
	14K SAMPLE #2533	14KY	14KY CAST 2PT(6)/070 18MM SNAP HOOP	1.1508
	14K XSAMPLE #2533	14KW	14KW CAST 2PT(6)/070 18MM SNAP HOOP	1.1508
	14K SAMPLE #3303	14KY	14KY 3MM ROUND (5)/ 15X20 OVAL SNAP HOOP	1.0977
	14K XSAMPLE #3303	14KW	14KW 3MM ROUND (5)/ 15X20 OVAL SNAP HOOP	1.0977
	14K SAMPLE #3304	14KY	14KY 3MM ROUND (5)/ 17X27 OVAL SNAP HOOP	1.3421
	14K XSAMPLE #3304	14KW	14KW 3MM ROUND (5)/ 17X27 OVAL SNAP HOOP	1.3421

****PLEASE NOTE IF REAL RHODIUM PLATE REQUIRED WOULD BE AN ADDITIONAL CHARGE**

****PLEASE CONTACT YOUR SALES/CUSTOMER SERVICE CONTACT FOR EXACT PRICING SINCE GOLD**

MARKET/WEIGHTS CAN VARY

14K BASIC LEVERBACKS



STYLE #	14K GRAMS/PIECE
1300	0.2496
1300A	0.2423
1300T	0.2039
1300AT	0.1966



STYLE #	14K GRAMS/PIECE
1300-L	0.2807
1300A-L	0.2734
1300T-L	0.2397
1300AT-L	0.2323



STYLE #	14K GRAMS/PIECE
1300-L-S	0.3631
1300A-L-S	0.3558
1300T-L-S	0.3221
1300AT-L-S	0.3148



STYLE #	14K GRAMS/PIECE
LL270	0.3025
LL270A	0.2952
LL270T	0.2614
LL270AT	0.2541

****PLEASE NOTE IF REAL RHODIUM PLATE REQUIRED WOULD BE AN ADDITIONAL CHARGE
 **PLEASE CONTACT YOUR SALES/CUSTOMER SERVICE CONTACT FOR EXACT PRICING SINCE GOLD
 MARKET/WEIGHTS CAN VARY**

**PLEASE NOTE WHITE GOLD WOULD BE SAME WEIGHTS-STYLE # WOULD BE NOTED WITH AN "X" IN FRONT OF EXISTING NUMBER

14K BASIC LEVERBACKS



STYLE #	14K GRAMS/PIECE
LLT1	0.4031
LLT1A	0.3958
LLT1T	0.3621
LLT1AT	0.3547

1/2 PT DIAMOND ILLUSION LEVER W/LOOP



STYLE #	14K GRAMS/PIECE
LK3786	0.8502

****PLEASE NOTE IF REAL RHODIUM PLATE REQUIRED WOULD BE AN ADDITIONAL CHARGE**
****PLEASE CONTACT YOUR SALES/CUSTOMER SERVICE CONTACT FOR EXACT PRICING SINCE GOLD MARKET/WEIGHTS CAN VARY**

**PLEASE NOTE WHITE GOLD WOULD BE SAME WEIGHTS-STYLE # WOULD BE NOTED WITH AN "X" IN FRONT OF EXISTING NUMBER

14K ILLUSION PLATES WITH DIAMONDS



DIAMOND CUT PLATE



LINE CUT PLATE



STAR CUT PLATE

STYLE #	ILLUSION TYPE	SHAPE	MM SIZE	DIAMOND SIZE	14K GRAMS /PIECE
IK2.5-1/2-DA	DIAM CUT	ROUND	2.5MM	1/2PT	0.0232
IK2.5-1.5-DO	DIAM CUT	ROUND	2.5MM	1.5PT	0.0266
IK3.1/2-DA	DIAM CUT	ROUND	3MM	1/2PT	0.0295
IK3.1-DA	DIAM CUT	ROUND	3MM	1PT	0.0295
IK3.2-1-DS	DIAM CUT	ROUND	3.2MM	1PT	0.0457
IK3.8-1/2-DO	DIAM CUT	ROUND	3.8MM	1/2PT	0.0852
IK3.8-2.5-DO	DIAM CUT	ROUND	3.8MM	2.5PT	0.0711
IK2.7SQ-1-DO	DIAM CUT	SQUARE	2.7MM	1PT	0.0406

STYLE #	ILLUSION TYPE	SHAPE	MM SIZE	DIAMOND SIZE	14K GRAMS /PIECE
IK3-1/2L-DA	LINE	ROUND	3MM	1/2PT	0.0295
IK4-1/2-DA	LINE	ROUND	4MM	1/2PT	0.0575
IK5-1/2-DA	LINE	ROUND	5MM	1/2PT	0.0855
IK3SQ-1/2-DA	LINE	SQUARE	3X3	1/2PT	0.0404
IK4SQ-1/2-DA	LINE	SQUARE	4X4	1/2PT	0.0700
IK5SQ-1/2-DA	LINE	SQUARE	5X5	1/2PT	0.0871
IK4H-1/2-DA	LINE	HEART	4X4	1/2PT	0.0513
IK5H-1/2-DA	LINE	HEART	5X5	1/2PT	0.0840
IK6H-1/2-DA	LINE	HEART	6X6	1/2PT	0.1400
IK5X3MQ-1/2-DA	LINE	MARQUISE	5X3	1/2PT	0.0311
IK6X4OC-1/2-DA	LINE	OCTAGON	6X4	1/2PT	0.0949

STYLE #	ILLUSION TYPE	SHAPE	MM SIZE	DIAMOND SIZE	14K GRAMS /PIECE
IK2S-1/2-DA	STAR	ROUND	2MM	1/2PT	0.0171
KSAMP #1196-DA	STAR	ROUND	3MM	1/2PT	0.0404
IK4S-1/2-DA	STAR	ROUND	4MM	1/2PT	0.0723

****DA IS \$50.00CT DIAMONDS/DO IS \$85.00/CT DIAMONDS/DS IS \$80.00/CT DIAMONDS**

****PLEASE NOTE IF REAL RHODIUM PLATE REQUIRED WOULD BE AN ADDITIONAL CHARGE**

**** PRICING REFLECTS PROMOTIONAL DIAMONDS SET IN PLATE**

****PLEASE CONTACT YOUR SALES/CUSTOMER SERVICE CONTACT FOR EXACT PRICING SINCE GOLD MARKET/WEIGHTS CAN VARY**

****PLEASE NOTE WHITE GOLD WOULD BE SAME WEIGHTS- STYLE # WOULD BE NOTED WITH AN "X" IN FRONT OF EXISTING NUMBER**
 DIAMOND FINDINGS CATALOG 2011-MAY-WEB.xls